

# Burley Band Audition Requirements

## Intermediate Band General Requirements: Scales and *Impactus* by Gary Gazlay

### Flute

Scales: Basic Chromatic Scale (page 41), F, Bb, Eb major

Excerpt: *Impactus* by Gary Gazlay

### Clarinet

Scales: Basic Chromatic Scale (page 41), G, C, F major

Excerpt: *Impactus* by Gary Gazlay

### Saxophone

Scales: Basic Chromatic Scale (page 41) D, G, C major

Excerpt: *Impactus* by Gary Gazlay

### Trumpet

Scales: Basic Chromatic Scale (page 41), G, C, F major

Excerpt: *Impactus* by Gary Gazlay

### Horn

Scales: Basic Chromatic Scale (page 41), C, F, Bb major

Excerpt: *Impactus* by Gary Gazlay

### Trombone

Scales: Basic Chromatic Scale (page 41), F, Bb, Eb major

Excerpt: *Impactus* by Gary Gazlay

### Baritone/Euphonium

Scales: Basic Chromatic Scale (page 41), F, Bb, Eb major

Excerpt: *Impactus* by Gary Gazlay

### Tuba

Scales: Basic Chromatic Scale (page 41), F, Bb, Eb major

Excerpt: *Impactus* by Gary Gazlay

### Percussion

Scales: long roll

Excerpt: *Impactus* by Gary Gazlay mm. 57 – End (snare), mm. 9 – 37 (bells)

### Basic Chromatic Scale

### Advanced Chromatic Scale

### Tuning Notes

**Traditional Band  
Tuning Note = Concert B $\flat$**

**Recommended Tuning Note**

**Adjustment Procedure**

*adjust main slide*

## Major Flat Scales

1 Octave

**C Major**  
Concert B $\flat$



**F Major**  
Concert E $\flat$



**B $\flat$  Major**  
Concert A $\flat$



**E $\flat$  Major**  
Concert D $\flat$



**A $\flat$  Major**  
Concert G $\flat$



**D $\flat$  Major**  
Concert B



**G $\flat$  Major**  
Concert E



**C $\flat$  Major**  
Concert A



Order of Flats  
B $\flat$ , E $\flat$ , A $\flat$ , D $\flat$ , G $\flat$ , C $\flat$ , F $\flat$

## Major Sharp Scales

1 Octave

**C Major**  
Concert  $\text{C}_4$



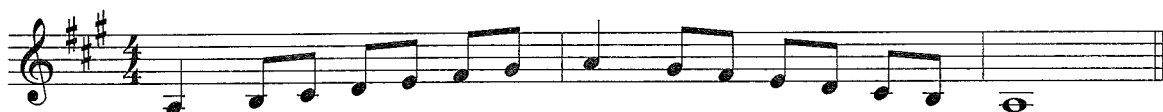
**G Major**  
Concert F



**D Major**  
Concert C



**A Major**  
Concert G



**E Major**  
Concert D



**B Major**  
Concert A



**F# Major**  
Concert E



**C# Major**  
Concert B



Order of Sharps  
F#, C#, G#, D#, A#, E#, B#

Dedicated to my parents, Nan and Dwight Gazlay.

# IMPACTUS

B $\flat$  TRUMPET

GARY GAZLAY

1 **Allegro**  
*f marcato*

2 3 4 5

6 7 8 9 10 11

12 13 14 15 16 17-20 4

21 22 23 24 25 26

*mf legato* *f marcato*

27 28 29 30 31 32

33 34 35 *div.* 36 37-44 **Moderato** 45 *unis.* 46

*rit.* *mf legato*

47 48 49 50 51 52 53

*f*

54 55 56 57-64 **Allegro** 65 66 67

*rit.* *f marcato*

68 69 70 71 72 73

74-75 2 76 77 78 79 80 *div.* 81 *unis.*

*mf* *f*