

Burley Band Audition Requirements

Intermediate Band General Requirements: Scales and *Impactus* by Gary Gazlay

Flute

Scales: Basic Chromatic Scale (page 41), F, Bb, Eb major
Excerpt: *Impactus* by Gary Gazlay

Clarinet

Scales: Basic Chromatic Scale (page 41), G, C, F major
Excerpt: *Impactus* by Gary Gazlay

Saxophone

Scales: Basic Chromatic Scale (page 41) D, G, C major
Excerpt: *Impactus* by Gary Gazlay

Trumpet

Scales: Basic Chromatic Scale (page 41), G, C, F major
Excerpt: *Impactus* by Gary Gazlay

Horn

Scales: Basic Chromatic Scale (page 41); C, F, Bb major
Excerpt: *Impactus* by Gary Gazlay

Trombone

Scales: Basic Chromatic Scale (page 41), F, Bb, Eb major
Excerpt: *Impactus* by Gary Gazlay

Baritone/Euphonium

Scales: Basic Chromatic Scale (page 41), F, Bb, Eb major
Excerpt: *Impactus* by Gary Gazlay

Tuba

Scales: Basic Chromatic Scale (page 41), F, Bb, Eb major
Excerpt: *Impactus* by Gary Gazlay

Percussion

Scales: long roll
Excerpt: *Impactus* by Gary Gazlay mm. 57 – End (snare), mm. 9 – 37 (bells)

Basic Chromatic Scale

Advanced Chromatic Scale

**use alternate fingering*

Tuning Notes

**Traditional Band
Tuning Note = Concert B \flat**

Recommended Tuning Note

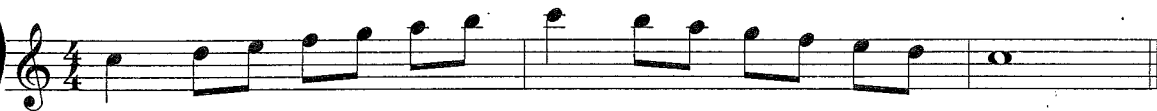
Adjustment Procedure

adjust mouthpiece

Major Sharp Scales

1 Octave

C Major
Concert Eb



G Major
Concert Bb



D Major
Concert F



A Major
Concert C



E Major
Concert G



B Major
Concert D



F# Major
Concert A



C# Major
Concert E



Order of Sharps
F#, C#, G#, D#, A#, E#, B#

Dedicated to my parents, Nan and Dwight Gazlay.

IMPACTUS

E♭ ALTO SAXOPHONE

GARY GAZLAY

1 **Allegro**
f marcato

7 8 9 10 11 12

13 14 15 16 17-20 4 21 22
mf legato

23 24 25 26 27 28
f marcato

29 30 31 32 33 34
rit.

35 36 37-44 8 45 46 47 48
Moderato
mf legato

49 50 51 52 53 54 55 56
f
rit.

57 **Allegro**
mf 58 59-62 4 63 64 65 66
mf marcato *f*

67 68 69 70 71 72 73

74-75 2 76 77 78 79 80 81
mf *f*