

Burley Band Audition Requirements

Intermediate Band General Requirements: Scales and *Impactus* by Gary Gazlay

Flute

Scales: Basic Chromatic Scale (page 41), F, Bb, Eb major

Excerpt: *Impactus* by Gary Gazlay

Clarinet

Scales: Basic Chromatic Scale (page 41), G, C, F major

Excerpt: *Impactus* by Gary Gazlay

Saxophone

Scales: Basic Chromatic Scale (page 41) D, G, C major

Excerpt: *Impactus* by Gary Gazlay

Trumpet

Scales: Basic Chromatic Scale (page 41), G, C, F major

Excerpt: *Impactus* by Gary Gazlay

Horn

Scales: Basic Chromatic Scale (page 41), C, F, Bb major

Excerpt: *Impactus* by Gary Gazlay

Trombone

Scales: Basic Chromatic Scale (page 41), F, Bb, Eb major

Excerpt: *Impactus* by Gary Gazlay

Baritone/Euphonium

Scales: Basic Chromatic Scale (page 41), F, Bb, Eb major

Excerpt: *Impactus* by Gary Gazlay

Tuba

Scales: Basic Chromatic Scale (page 41), F, Bb, Eb major

Excerpt: *Impactus* by Gary Gazlay

Percussion

Scales: long roll

Excerpt: *Impactus* by Gary Gazlay mm. 57 – End (snare), mm. 9 – 37 (bells)

Basic Chromatic Scale

Musical notation for the Basic Chromatic Scale, consisting of two staves. The first staff shows the ascending scale from middle C (C4) to G4, and the second staff shows the descending scale from G4 to C4. Each note is accompanied by a chromatic alteration (sharp or flat) to show the interval between notes.

Advanced Chromatic Scale

Musical notation for the Advanced Chromatic Scale, consisting of three staves. The first staff shows the ascending scale from middle C (C4) to G4. The second staff shows the descending scale from G4 to C4. The third staff shows the ascending scale from C4 to G4 with chromatic alterations. The notation includes various note values and rests to indicate the timing and phrasing of the scale.

Tuning Notes

**Traditional Band
Tuning Note = Concert B \flat**

Musical notation for the traditional band tuning note, showing a single note (B \flat) on a staff.

Recommended Tuning Note

Step 1

Musical notation for Step 1 of the recommended tuning note, showing a sequence of notes: C4, D4, E4, F4, G4, A4, B4, and C5.

Step 2

Musical notation for Step 2 of the recommended tuning note, showing a sequence of notes: C4, D4, E4, F4, G4, A4, B4, and C5.

Step 3

Musical notation for Step 3 of the recommended tuning note, showing a sequence of notes: C4, D4, E4, F4, G4, A4, B4, and C5.

Adjustment Procedure

adjust main slide

adjust 2nd valve slide

adjust 1st valve slide

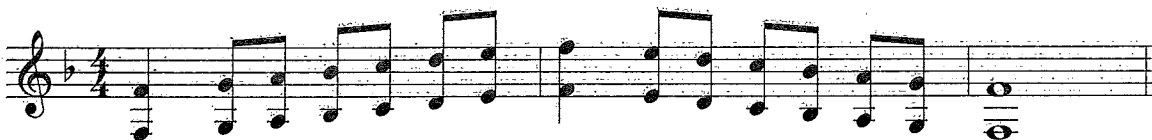
Major Flat Scales

1 Octave

C Major
Concert F



F Major
Concert Bb



Bb Major
Concert Eb



Eb Major
Concert Ab



Ab Major
Concert Db



Db Major
Concert Gb



Gb Major
Concert B



Cb Major
Concert E



Order of Flats
Bb, Eb, Ab, Db, Gb, Cb, Fb

Dedicated to my parents, Nan and Dwight Gazlay.

IMPACTUS

F HORN

GARY GAZLAY

1 **Allegro**
f marcato

7 8 9 10 11 12

13 14 15 16 17-20 4 21 22
mf legato

23 24 25 26 27 28
f marcato

29 30 31 32 33 34
rit.

35 **Moderato** 37-44 8 45 46 47 48
mf legato

49 50 51 52 53 54 55 56
f
rit.

57 **Allegro** 58 59-62 4 63 64 65 66
mf *mf marcato* *f*

67 68 69 70 71 72 73

74-75 2 76 77 78 79 80 81
mf *f*