

Burley Band Audition Requirements

Advanced Band General Requirements: Scales and *Winds of Celebration* by Tyler Grant

Flute

Scales: Advanced Chromatic Scale (page 41), F, Bb, Eb, G, D, A major
Excerpt: *Winds of Celebration* by Tyler Grant

Clarinet

Scales: Advanced Chromatic Scale (page 41), F, Bb, Eb, G, D, A (concert)
Excerpt: *Winds of Celebration* by Tyler Grant

Saxophone

Scales: Advanced Chromatic Scale (page 41), E – Bb (concert)
Excerpt: *Winds of Celebration* by Tyler Grant

Trumpet

Scales: Advanced Chromatic Scale (page 41), F, Bb, Eb, G, D, A (concert)
Excerpt: *Winds of Celebration* by Tyler Grant

Horn

Scales: Advanced Chromatic Scale (page 41), D – A flat (concert)
Excerpt: *Winds of Celebration* by Tyler Grant

Trombone

Scales: Advanced Chromatic Scale (page 41) G – D flat (concert)
Excerpt: *Winds of Celebration* by Tyler Grant

Baritone/Euphonium

Scales: Advanced Chromatic Scale (page 41) G – D flat (concert)
Excerpt: *Winds of Celebration* by Tyler Grant

Tuba

Scales: Advanced Chromatic Scale (page 41) G – D flat (concert)
Excerpt: *Winds of Celebration* by Tyler Grant

Percussion

Scales: Long roll, Bonus: paradiddle, 5-stroke roll, 9-stroke roll, drag, flam tap.
Excerpt: *Winds of Celebration* by Tyler Grant, Snare (whole piece) and Bells (mm. 1-51)

Basic Chromatic Scale

Two staves of music showing a chromatic scale in 4/4 time. The first staff starts on G4 and ascends chromatically to G5. The second staff starts on G4 and descends chromatically to G3. Asterisks are placed under the notes G4 and G5 in both directions.

Advanced Chromatic Scale

Three staves of music showing an advanced chromatic scale in 2/4 time. The first staff ascends from G4 to G5. The second staff descends from G5 to G4. The third staff continues the descent from G4 to G3. Asterisks are placed under the notes G4 and G5 in both directions. A note on the third staff has the instruction: **use alternate fingering*.

Tuning Notes

**Traditional Band
Tuning Note = Concert B \flat**

Notation for the traditional band tuning note, Concert B \flat , shown as a single note on a staff.

Recommended Tuning Note

Step 1

Notation for Step 1 of the recommended tuning note, showing a sequence of notes leading to the target note.

Adjustment Procedure

adjust barrel

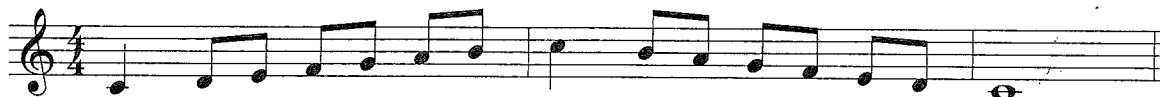
Step 2

Notation for Step 2 of the recommended tuning note, showing a sequence of notes leading to the target note.

adjust middle joint

Major Flat Scales

1 Octave

C Major
Concert B \flat **F Major**
Concert E \flat **B \flat Major**
Concert A \flat **E \flat Major**
Concert D \flat **A \flat Major**
Concert G \flat **D \flat Major**
Concert B**G \flat Major**
Concert E**C \flat Major**
Concert A

Order of Flats

B \flat , E \flat , A \flat , D \flat , G \flat , C \flat , F \flat

Major Sharp Scales

1 Octave

C Major
Concert B \flat



G Major
Concert F



D Major
Concert C



A Major
Concert G



E Major
Concert D



B Major
Concert A



F# Major
Concert E



C# Major
Concert B



Order of Sharps
F#, C#, G#, D#, A#, E#, B#

WINDS OF CELEBRATION

TYLER S. GRANT
(ASCAP)

Energetic! ($\text{♩} = \text{ca.} 152$)

3 4 5 6

7 9 10 11 12 13

14 15 16 17 18 19 20

21 22 23 24 25

26 27 28 29 30 31

32 34 35 36 37 2

39 40 41 42 43

45 46 47 48 49 50

51 52 53 54 55 56 To Coda

Copyright © 2012 The FJH Music Company Inc. (ASCAP).
International Copyright Secured. Made in U.S.A. All Rights Reserved.

WARNING! The music, text, design, and graphics in this publication are protected by copyright law.
Any duplication is an infringement of U.S. copyright law.



Hear and download this
piece at www.fjhmusic.com

Winds of Celebration - Cl. 1

57 58 59 *rit.* 61 62 63 64
mf

65 **Andante espressivo** (♩ = 80)

68 69 70 72
mp

73 74 75 3 78 79 80 81 82
mf

83 84 85 86 87 88 90
p mp mf sfz *rall.*

91 **Con moto** (♩ = 88)

93 94 95 97 98
f

99 2 101 102 104 105 106 107
mp mf *rit.*

108 **Energetic!** (♩ = ca.152)

110 111 112 113
mf

114 116 117 118 *D.S. al Coda*
f

Coda

120 121 122
mf

124 125 126 127
ff