

Overlords

INT BAND

SEAN O'LOUGHLIN

Fast ♩ = 144

FPS55

Musical score for Trumpet 1 in B♭, titled "Overlords" by Sean O'Loughlin. The score is for an "INT BAND" and is marked "Fast" with a tempo of 144 beats per minute. It consists of 11 staves of music in 4/4 time, starting with a dynamic of *f* (forte). The score includes various musical notations such as slurs, accents, and dynamic markings like *mf* (mezzo-forte) and *ff* (fortissimo). Measure numbers are indicated below the notes, and some measures are boxed with their numbers (9, 21, 29, 37, 45, 53, 61, 69). The piece concludes with a final measure marked *ff*.

Broken Bow

1st B♭ TRUMPET

ADU BAND

By Carl Strommen (ASCAP)

Bright country ♩ = 120

1 *mf* 2 3 4

5 6 7 8

9 10 11 12

13 14 15 *mp*

16 17 18 *mf* 19 20 21

22 23 24 25

26 27-29 30 31 32

33 34 35 36

37 38 39 40

1st B♭ TRUMPET - 2

43 Broadly, L'istesso tempo

41 42 44 *mp*

45 46 47 48 49

50 51 52 53 54

55 56 57 58 *mf*

59 60 61 62 *mp*

63 64 65 66 *mf*

67 68 69 70 *mf*

71 72-74 75 76 *mf*

77 78 79 80 *mf*

Basic Chromatic Scale

Advanced Chromatic Scale

*use alternate fingering

Tuning Notes

Traditional Band
Tuning Note = Concert B \flat

Recommended Tuning Note

Step 1

Adjustment Procedure

adjust barrel

Step 2

adjust middle joint

Major Flat Scales

1 Octave

✓ C Major
Concert B \flat



✓ F Major
Concert E \flat



✓ B \flat Major
Concert A \flat



✓ E \flat Major
Concert D \flat



✓ A \flat Major
Concert G \flat



D \flat Major
Concert B



G \flat Major
Concert E



C \flat Major
Concert A



Order of Flats
B \flat , E \flat , A \flat , D \flat , G \flat , C \flat , F \flat

Major Sharp Scales

1 Octave

C Major
Concert B \flat



G Major
Concert F



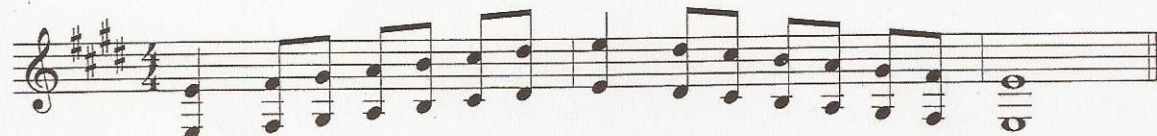
D Major
Concert C



A Major
Concert G



E Major
Concert D



B Major
Concert A



F# Major
Concert E



C# Major
Concert B



Order of Sharps
F#, C#, G#, D#, A#, E#, B#