

## INT BAND

SEAN O'LOUGHLIN

Fast  $\text{♩} = 144$

FPS55

1 2 3 4 5 6

7 8 9 10 11 12

13 14 15 16 17 18

19 20 21 22-28 29 30

31 32 33 34 35 36

37 38-44 45 46 47 48

49 50 51 52 53 54 55

56 57 58 59 60 61 62

63 64 65 66 67 68

69 70 71 72 73 74 75

# Broken Bow

E♭ ALTO SAXOPHONE

By Carl Strommen (ASCAP)

## ADU BAND

Bright country ♩ = 120

1 *mf*

2 3 4

5 6 7 8

9

10 11 12

13 14 15

16

*mp* *mf*

(Tpt. 1) *mf*

17 *mp* *mf* 18 *mp* 19 20

21 22 23 24 25

26 **Play** *mf* 27 28 29

30 31 32 33

34

35 36 37

E♭ ALTO SAXOPHONE - 2

38 39 40 41

43 Broadly, L'istesso tempo

42 44 45 46

*mp*

47 48 49 50 51

52 53 54 55 56

57

57 58 59 60

*mf*

63 (Tpt. 1)

61 62 64

*mp* *mf*

65 66 67 68

71 Play

69 70 72

73 74 75 76

77 78 79 80

### Basic Chromatic Scale

### Advanced Chromatic Scale

*\*use alternate fingering*

### Tuning Notes

**Traditional Band  
Tuning Note = Concert B $\flat$**

**Recommended Tuning Note**


**Adjustment Procedure**

*adjust mouthpiece*

## Major Flat Scales

1 Octave

✓ **C Major**  
Concert Eb



✓ **F Major**  
Concert Ab




✓ **Bb Major**  
Concert Db



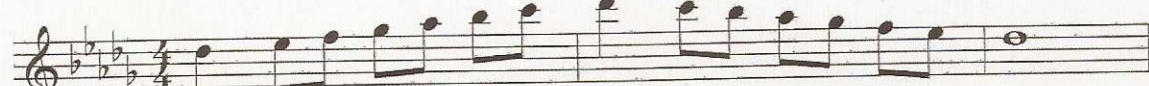
✓ **Eb Major**  
Concert Gb




✓ **Ab Major**  
Concert B




**Db Major**  
Concert E



**Gb Major**  
Concert A



**Cb Major**  
Concert D



Order of Flats  
Bb, Eb, Ab, Db, Gb, Cb, Fb



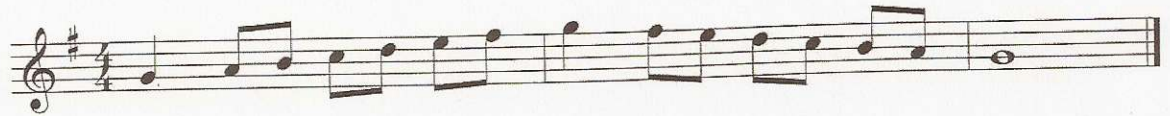
# Major Sharp Scales

1 Octave

C Major  
Concert Eb



✓ G Major  
Concert Bb



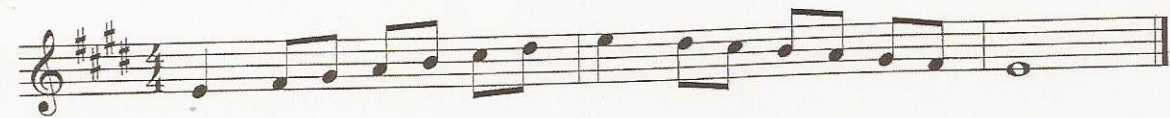
✓ D Major  
Concert F



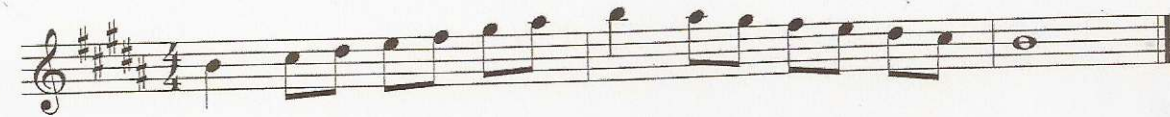
✓ A Major  
Concert C



✓ E Major  
Concert G



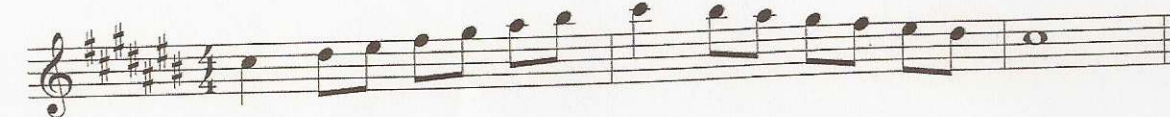
B Major  
Concert D



→ F# Major  
Concert A



C# Major  
Concert E



Order of Sharps  
F#, C#, G#, D#, A#, E#, B#